

Rakenna Ja Asu 2023



Oil Pattern Distance: 38 Feet **Reverse Brush Drop:** 34 Feet **Oil Per Board:** 45 uL
Forward Oil Total: 10.35 mL **Reverse Oil Total:** 10.62 mL **Volume Oil Total:** 20.97 mL
Forward Boards Crossed: 230 Boards **Reverse Boards Crossed:** 236 Boards **Total Boards Crossed:** 466 Boards

Start	Stop	Loads	Speed	Crossed	Start	End	Feet	T.Oil
1	2L 2R	1	14	37	0.0	0.0	0.0	1665
2	2L 2R	1	14	37	0.0	1.9	1.9	1665
3	6L 6R	1	14	29	1.9	3.8	1.9	1305
4	7L 7R	2	18	54	3.8	8.9	5.1	2430
5	8L 8R	2	18	50	8.9	14.0	5.1	2250
6	9L 9R	1	18	23	14.0	16.5	2.5	1035
7	2L 2R	0	18	0	16.5	22.0	5.5	0
8	2L 2R	0	22	0	22.0	32.0	10.0	0
9	2L 2R	0	26	0	32.0	38.0	6.0	0

Forward Reverse More

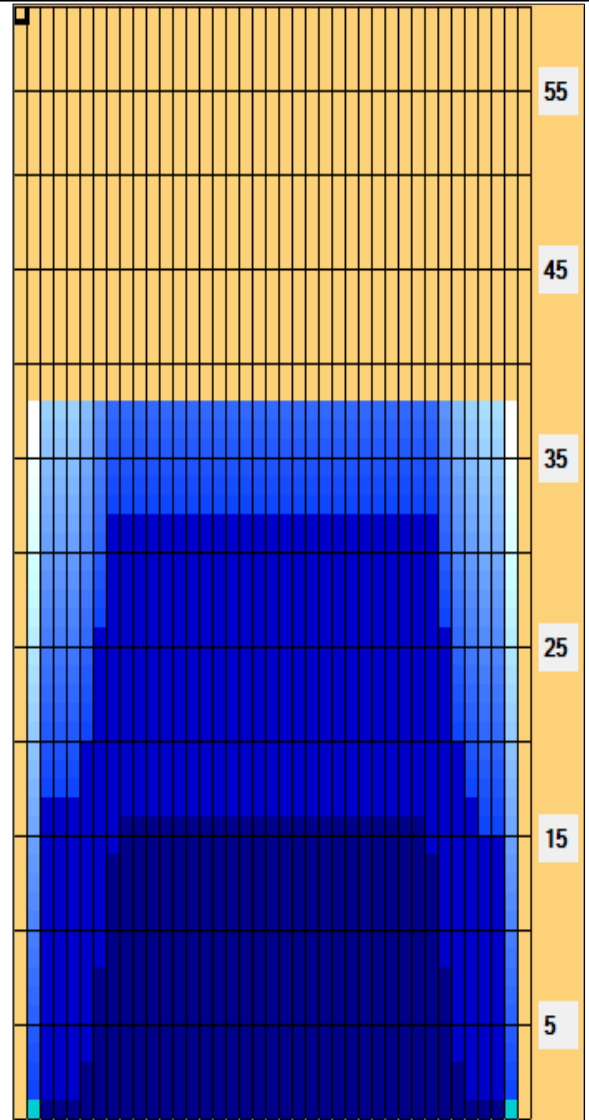
Start	Stop	Loads	Speed	Crossed	Start	End	Feet	T.Oil
1	2L 2R	0	30	0	38.0	32.0	-6.0	0
2	8L 8R	2	22	50	32.0	25.8	-6.2	2250
3	7L 7R	2	22	54	25.8	19.6	-6.2	2430
4	6L 6R	1	18	29	19.6	17.1	-2.5	1305
5	3L 5R	1	14	33	17.1	15.2	-1.9	1485
6	3L 3R	2	14	70	15.2	11.3	-3.9	3150
7	2L 2R	0	14	0	11.3	0.0	-11.3	0

Forward Reverse More

Conditioner:
Type In or Select One

TransferType:
Type In or Select One

- Forward
- Reverse
- Combined
- Buff



Item	3L-7L:18L-18R	8L-12L:18L-18R	13L-17L:18L-18R	18L-18R:17R-13R	18L-18R:12R-8R	18L-18R:7R-3R
Description	Outside Track:Middle	Middle Track:Middle	Inside Track:Middle	Middle: Inside Track	Middle:Middle Track	Middle:Outside Track
Track Zone Ratio	2.42	1.01	1	1	1.01	2.58

