

# Keilakukko Hallimestaruus 2026



**Oil Pattern Distance:** 40 Feet      **Reverse Brush Drop:** 35 Feet      **Oil Per Board:** 45 uL  
**Forward Oil Total:** 10.935 mL      **Reverse Oil Total:** 10.755 mL      **Volume Oil Total:** 21.69 mL  
**Forward Boards Crossed:** 243 Boards      **Reverse Boards Crossed:** 239 Boards      **Total Boards Crossed:** 482 Boards

Start	Stop	Loads	Speed	Crossed	Start	End	Feet	T.Oil
1	2L 2R	3	10	111	0.0	2.8	2.8	4995
2	4L 4R	3	14	99	2.8	8.7	5.9	4455
3	4L 4R	1	14	33	8.7	10.6	1.9	1485
4	4L 4R	0	18	0	10.6	27.0	16.4	0
5	4L 4R	0	22	0	27.0	34.0	7.0	0
6	4L 4R	0	26	0	34.0	40.0	6.0	0

Start	Stop	Loads	Speed	Crossed	Start	End	Feet	T.Oil
1	2L 2R	0	30	0	40.0	25.0	-15.0	0
2	4L 4R	1	18	33	25.0	22.5	-2.5	1485
3	4L 4R	1	14	33	22.5	20.6	-1.9	1485
4	4L 4R	1	14	33	20.6	18.7	-1.9	1485
5	3L 3R	2	14	70	18.7	14.8	-3.9	3150
6	3L 3R	2	14	70	14.8	10.9	-3.9	3150
7	2L 2R	0	10	0	10.9	0.0	-10.9	0

Conditioner:  
Type In or Select One

TransferType:  
Type In or Select One

Forward



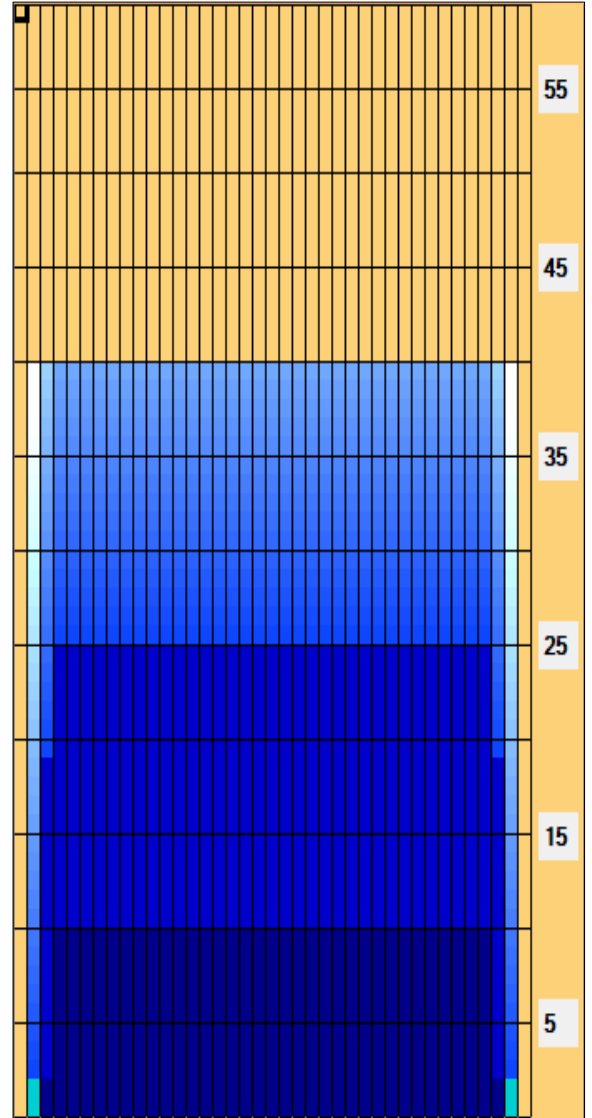
Reverse



Combined



Buff



Item	3L-7L:18L-18R	8L-12L:18L-18R	13L-17L:18L-18R	18L-18R:17R-13R	18L-18R:12R-8R	18L-18R:7R-3R
Description	Outside Track:Middle	Middle Track:Middle	Inside Track:Middle	Middle: Inside Track	Middle:Middle Track	Middle:Outside Track
Track Zone Ratio	1.11	1	1	1	1	1.11

